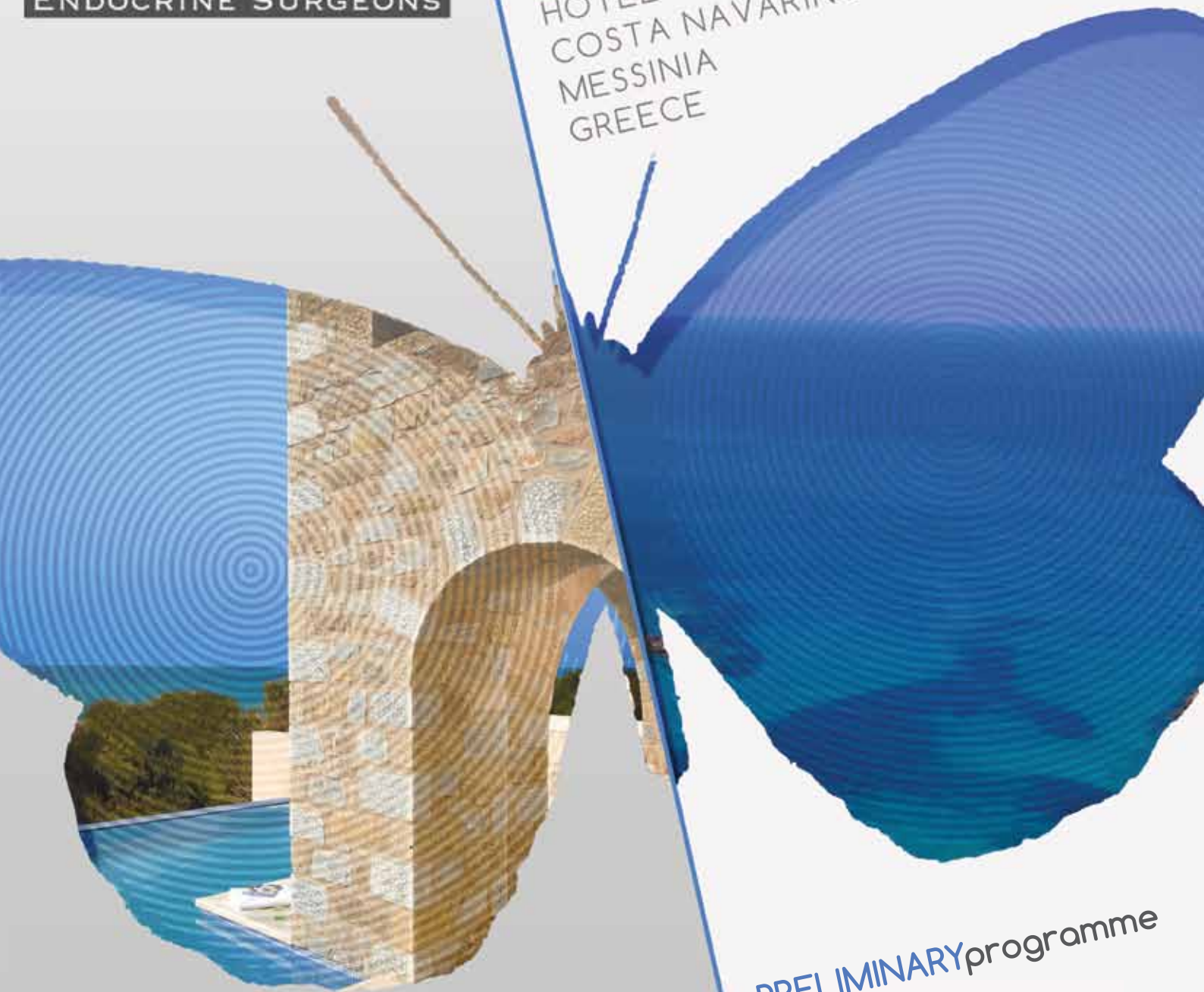


13<sup>th</sup>  
INTERNATIONAL  
POSTGRADUATE  
COURSE IN  
ENDOCRINE  
SURGERY  
28/9-1/10

*International Association of*  
**ENDOCRINE SURGEONS**

**2014**  
HOTEL  
COSTA NAVARINO  
MESSINIA  
GREECE



PRELIMINARY programme

# COMMITTEES

## IAES FACULTY

Goran Akerstrom, (Sweden)  
Quan Duh (USA)\*\*  
Peter Goretzki (Germany)  
Barney Harrison (U.K.)\*  
Jean-Francois Henry (France)  
Chen Hsen Lee (Taiwan)\*\*  
Dimitrios Linos (Greece)\*  
Akira Miyauchi (Japan)  
Bruno Niederle (Austria)  
Janice Pasioka (Canada)\*\*  
Allan Siperstein (USA)  
Geoffrey Thompson (USA)  
Jan Zedenius (Sweden)

\* Chairman Local Organizing Committee  
\*\*Programme Committee



## CONTRIBUTING FACULTY

Maria Alevizaki (Greece)  
Evi Diamanti-Kandaraki (Greece)  
Sofia Balafouta Tseleni (Greece)  
Tian Bole (China)  
George Chrousos (Greece)  
Metė Dürėn (Turkey)  
Xue Gang (China)  
Xin Gao (China)  
John Giotakis (Greece)  
Apostolos Goropoulos (Greece)  
Chen Guang (China)  
Tianquan Han (China)

Hiaolung Huang (China)  
Qinghai Ji (China)  
Yu Jichoun (China)  
Ilias Kafetzis (Greece)  
Long Jiang (China)  
Wenhui Lou (China)  
Anastasios Machairas (Greece)  
Ozer Makay (Turkey)  
John Makris (Greece)  
George Mastorakos (Greece)  
Yiping Mou (China)  
George Papageorgiou (Greece)

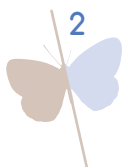
Wang Ping (China)  
Ling Rui (China)  
Gregory Randolph (USA)  
Stylianios Tsagarakis (Greece)  
John Vassiliou (Greece)  
He Xianghui (China)  
Meng Xianying (China)  
Lu Xiubo (China)  
Fan Youben (China)  
Liquan Zhou (China)  
George N. Zografos (Greece)  
George K. Zografos (Greece)

## HONORARY SCIENTIFIC COMMITTEE

RuiHua An (China)  
George Antsaklis (Greece)  
Virgilions Beisa (Lithuania)  
Nikola Besic (Slovenia)  
Bruno Carnaille (France)  
Sergig Cherenko (Ukraine)  
Peer Christiansen (Denmark)  
Stanislaw Cichon (Poland)  
Jose Emilio Craveiro Rocha (Portugal)  
Athanassios Meletios Dimopoulos (Greece)  
Gianluca Donatini (Italy)  
Danizel Dosen (Croatia)  
Henning Dralle (Germany)  
Zhilu Fan (China)  
Yaowen Fu (China)  
Jiangping Gao (China)  
Bertil Hamberger (Sweden)  
Richard Hodin (USA)  
Yuchuan Hou (China)

Maurizio Iacobone (Italy)  
Svante Jansson (Sweden)  
Konstantinos Konstantinidis (Greece)  
Georgia Kostopanagiotou (Greece)  
Jean Louis Kraimps (France)  
Christof Kull (Switzerland)  
Liming Li (China)  
Xiuheng Liu (China)  
Celestino Lombardi (Italy)  
Radu Mihai (U.K.)  
Paolo Miccoli (Italy)  
Mario Morino (Italy)  
Barbara Mullineris (Italy)  
Thomas J. Musholt (Germany)  
Zenons Narbutis (Latvia)  
Fausto Palazzo (U.K.)  
Rumen Pandev (Bulgaria)  
Sareh Parangi (USA)  
Stratos Patsouris (Greece)

Roy Phitayakorn (USA)  
Nancy Perrier (USA)  
Anatoly Romanchishen (Russia)  
Christian Scheuba (Austria)  
Ioanna Sifaka (Greece)  
Dietmar Simon (Germany)  
Aris Sismanis (Greece)  
Antonio Sitges-Serra (Spain)  
Serdar Tezelman (Turkey)  
Sam Van Slycke (Belgium)  
Jan Erik Varhaug (Norway)  
Jesus Maria Villar Del Moral (Spain)  
Chunxi Wang (China)  
Martin Walz (Germany)  
Malcolm Wheeler (U.K.)  
Changli Wu (China)  
Haibo Xia (China)  
Changjun Yin (China)  
Xuebin Zhang (China)





## WELCOME MESSAGE

The International Postgraduate Courses in Endocrine Surgery, offered by the International Association of Endocrine Surgeons, have an established track record in offering quality education to participants from all over the world.

The 13<sup>th</sup> Postgraduate Course will be held in Messinia, Greece at the Costa Navarino resort. We are excited to welcome internationally recognized faculty and leading practitioners for lectures, debates, and interactive case report sessions. Moreover, given that informal meetings are often just as valuable as formal sessions, we look forward to meeting old friends and making new ones through archaeological tours, beach expeditions and fantastic Greek food and wine!

As the Chairman of the Local Organizing Committee, I look forward to welcoming you and your family to Greece, and sharing our hospitality with you.

Professor Dimitrios Linos, M.D., Ph.D



# PROGRAMME

## SUNDAY, 28

### September 2014

11.00 – 12.45

R E G I S T R A T I O N

#### GI / PANCREATIC NEUROENDOCRINE SESSION

12.45	Introduction	Dimitrios Linos / Barney Harrison
13.00	<b>Localization of PNETs</b> (EUS, Octreotide, Gallium dotatate, GLP)	Quan Duh
13.15	<b>Pancreatic Neuroendocrine Tumors (PNETS) - CASES</b>	<b>Moderator: Janice Pasiaka</b> Peter Goretzki Geoffrey Thompson Tianquan Han Leng Jia Hua Goran Akerstrom Wenhui Lou
14.00	<b>Pathological Classification of PNETs</b> New ENET and WHO classification	Goran Akerstrom
14.15	<b>What's new in treatment of NETs, Targeted therapies</b>	Jan Zedenius
14.30	Questions	
14.45	<i>Break</i>	
		<b>Chair: Anastasios Machairas</b>
15.15	<b>Surgery of MEN1 duodenum / pancreas - CASES</b>	<b>Moderator: Barney Harrison</b> Bruno Niederle Chen Hsen Lee George Zografos Xiaolun Huang Jan Zedenius Ilias Kafetzis
16.00	<b>Small bowel NET – presentation &amp; treatment</b>	Janice Pasiaka
16.15	End of Session	
16.30-18.30	<b>Workshop of the Greek Association of Endocrine Surgeons</b> <b>Advantages and disadvantages of continuous and intermittent neuromonitoring in thyroid cancer</b>	<b>Chair: John Makris</b> Gregory Randolph
18.30	<i>Break</i>	
19.00	<i>Opening Ceremony</i>	
20.00	<i>Welcome Dinner (included in the registration fee)</i>	





# PROGRAMME

MONDAY, 29  
September 2014



## PARATHYROID SESSION

Chair: John Vassiliou

- 08.15      **Primary hyperparathyroidism (PHPT):  
Planning your operation - CASES**
- Moderator: Geoffrey Thompson*  
Jean Francois Henry  
Chen Hsen Lee  
Chen Guang  
Maria Alevizaki  
George Papageorgiou
- 08.45      **Diagnostic and localization pitfalls - CASES**
- Moderator: Barney Harrison*  
Janice Pasioka  
Peter Goretzki  
Goran Akerstrom  
Allan Siperstein  
Dimitrios Linos
- 09.45      *Break*
- 10.15      **Intraoperative and reoperative dilemmas - CASES**
- Moderator: Janice Pasioka*  
Jean Francois Henry  
Bruno Niederle  
Akira Miyauchi  
Allan Siperstein
- 11.15      **Mild 'asymptomatic' PHPT 2014**
- Quan Duh
- 11.30      **Familial / Renal HPT - CASES**
- Moderator: Jan Zedenius*  
Peter Goretzki  
Bruno Niederle  
Chen Hsen Lee  
Qinghai Ji  
Allan Siperstein
- 12.30      *Lunch with Faculty*





# PROGRAMME

MONDAY, 29  
September 2014

## THYROID SESSION

**Chair: George Zografos**

13.30 **FNA and the thyroid nodule**

Sofia Balafouta Tseleni

13.45 **Have thyroid nodule - now what? - CASES**

**Moderator: Allan Siperstein**

Akira Miyauchi  
Barney Harrison  
Fan Youben  
Chen Hsen Lee  
Janice Pasioka

15.00 **Break**

**Chair: John Giotakis**

15.30 **How to use molecular genetic studies  
(gene expression classifier, BRAF mutation, etc)  
in the management of WDTC**

Quan Duh

15.45 **Adjuncts to thyroid surgery**

RLN monitor  
Vessel sealing  
PTH  
Robot

Peter Goretzki  
Dimitrios Linos  
Bruno Niederle  
Allan Siperstein

16.45 **Ultrasound Course for Thyroid and Parathyroid**

19.00 **End of the Session**



**PROGRAMME**  
TUESDAY, 30  
September 2014



**THYROID SESSION**

**Chair: Maria Alevizaki**

08.15	<b>Update on radiiodine ablation for DTC</b>	Barney Harrison
08.30	<b>Extent of surgery for gene carriers of hereditary Medullary Thyroid Cancer (MTC)</b> (including calcitonin level increased)	Bruno Niederle
08.45	<b>Benefits of continuous Intraoperative neuromonitoring?</b>	Peter Goretzki
09.00	<b>Papillary microcarcinoma</b> Impact of pathological risk factors Observation only	Geoffrey Thompson Akira Miyauchi

09.30 *Break*

**Chair: Evi Diamanti-Kandaraki**

10.00	<b>Calcitonin screening in nodular thyroid disease</b> DEBATE For Against	<b>Moderator: E. Diamanti-Kandaraki</b> Bruno Niederle Jan Zedenius
10.45	<b>The non recurrent RLN</b>	Jean-Francois Henry
11.00	<b>Routine prophylactic central neck node dissection</b> DEBATE Against Bilateral Unilateral	<b>Moderator: Janice Pasiaka</b> Barney Harrison Geoffrey Thompson Allan Siperstein

12.00 *Lunch with the Faculty*





# PROGRAMME

TUESDAY, 30  
September 2014

**Chair: George N. Zografos**

13.00	<b>Extent of lymphadenectomy for MTC</b>	Akira Miyauchi
13.15	<b>Intraoperative thyroid surgical dilemmas - CASES</b>	<b>Moderator: Quan Duh</b> Chen Hen Lee Peter Goretzki Goran Akerstrom Jean Francois Henry Apostolos Goropoulos
14.15	<b>Advanced sonographic techniques for thyroid nodules</b>	Allan Siperstein
14.30	<b>Repair of RLN</b>	Akira Miyauchi
15.00	<b>Ultrasound guided percutaneous ethanol ablation of recurrent, neck nodal metastasis</b>	Geoffrey Thompson

15.15 *Break*

**Chair: Ozer Makay**

15.45	<b>The benign thyroid nodule - CASES</b>	<b>Moderator: Bruno Niederle</b> Dimitrios Linos George Papageorgiou Chen Hsen Lee Goran Akerstrom
16.45	<b>End of the Session</b>	

19.30 *Course Farewell Dinner (optional)*





PROGRAMME  
WEDNESDAY, 01  
October 2014



**ADRENAL SESSION**

**Chair: Stylianos Tsagarakis**

08.15	<b>Adrenal Incidentaloma</b>	Dimitrios Linos
08.30	<b>The indeterminate adrenal mass</b>	Jean Francois Henry
08.45	<b>Preoperative preparation for pheochromocytoma</b>	Jan Zedenius
09.00	<b>Adrenalectomy -which surgical approach for the at risk / high risk lesion?</b> DEBATE Laparoscopic Open	<b>Moderator: Allan Siperstein</b>  Quan Duh Geoffrey Thompson
09.30	<b>Primary hyperaldosteronism – is SVC required prior to surgery?</b>	Janice Pasieka
09.45	<b>Primary hyperaldosteronism – is there a role for subtotal unilateral adrenalectomy?</b>	Barney Harrison
10.00	<i>Break</i>	
		<b>Chair: George Mastorakos</b>
10.30	<b>Cushing's disease</b>	George Chrousos
10.45	<b>Update on Familial Pheochromocytoma / Paraganglioma syndromes</b>	Goran Akerstrom
11.00	<b>Adrenal Challenges - CASES</b>	<b>Moderator: Peter Goretzki</b> Jean Francois Henry Quan Duh George Zografos Goran Akerstrom Gao Xin Liqun Zhou
12.00	<b>End of Course /Feedback</b>	
12.30	<i>Lunch with the Faculty</i>	



# GENERAL INFORMATION

## Venue

The Course will be held in Messinia, at Costa Navarino Hotel. Costa Navarino is located in the Greek region of Messinia in the southwest Peloponnese.

One of the most unspoiled and breathtaking seaside landscapes in the Mediterranean, this area and its people have been shaped by 4,500 years of history. The Costa Navarino philosophy is driven by a genuine desire to promote Messinia while preserving its natural beauty and heritage, which is why the building footprint at Costa Navarino will be less than 10% of the total land area.

Costa Navarino will comprise a number of distinct sites featuring 5-star deluxe hotels, luxury high-end residences, state-of-the-art conference facilities, world-class spa centers, signature golf courses, as well as a wide range of memorable activities and unique experiences for adults and children.



## Getting There

Costa Navarino is easily accessible by road from Athens, with a driving distance of about 270km (168mi). The driving distance from Kalamata International Airport to Costa Navarino is about 45km (23mi).

For more detailed information please visit:  
<http://www.costanavarino.com/#/arrive>

## Course Secretariat (Registration, Accommodation, Travel Services, Social Activities and Sponsoring)

For all relative inquiries please contact:



**ERA Ltd**, 17, Asklipiou Str., 106 80 Athens, Greece  
Tel: +30 210 3634 944, Fax: + 30 210 3631690,  
e-mail: [info@era.gr](mailto:info@era.gr), Web site: [www.era.gr](http://www.era.gr).

# REGISTRATION FEES SPECIAL ACCOMMODATION RATES

**Key dates** Deadline for reduced registration fees: **May 30<sup>th</sup>, 2014**  
Full payment for hotel Reservations: **June 30<sup>th</sup>, 2014**

## Registration Fees

To register to the "13<sup>th</sup> Postgraduate Course in Endocrine Surgery", please complete the enclosed registration form or download the registration form from the Course website: [www.endocrinesurgery2014.com](http://www.endocrinesurgery2014.com) and send it to "ERA LTD" by: fax: +30 210 3631690 or e-mail: [info@era.gr](mailto:info@era.gr) (Upon invoicing a 23% VAT is applicable on the registration fees).

DESCRIPTION	UNTIL MAY 30 <sup>th</sup> , 2014	AFTER MAY 30 <sup>th</sup> , 2014
General Participation	€ 350	€ 400
Member of Hellenic Medical Societies	€ 200	€ 200

The registration fees for all Participants cover:

- Access to the Scientific Sessions and Exhibition
- Opening Ceremony followed by a Welcome Dinner, on Sunday, September 28<sup>th</sup>, 2014
- Course material (Meeting kit, Book of Abstracts, Certificate of attendance)
- Coffee breaks & light lunches with refreshments

## Course Farewell Dinner

The Course Farewell Dinner will take place on **Tuesday, September 30, 2014**. Cost per person: **€ 60**.

## Hotel Reservation

HOTEL NAME	SINGLE	DOUBLE
Costa Navarino	€ 140	€ 140



The organizers advise all participants to reserve hotel rooms as soon as possible, to guarantee accommodation. Please use the enclosed Registration/Reservation form and specify type of room desired (single/double) as well as arrival and departure dates.

*Reservation of three nights hotel accommodation is compulsory.*

Room reservations should be addressed only to: **ERA Ltd.**, 17, Asklipiou Str., 106 80 Athens, Greece, Tel: +30 210 3634 944, Fax: +30 210 3631 690, e-mail: [info@era.gr](mailto:info@era.gr), Web site: [www.era.gr](http://www.era.gr).





# PAYMENT CONDITIONS CANCELLATION POLICY



## Payment conditions for registration and hotel reservation

- Full payment of the registration fee is required.
- Two (2) nights deposit, payable to **ERA Ltd**, is required in order to confirm your Hotel Reservation, not later than **May 30<sup>th</sup>, 2014**.
- Full payment for Hotel accommodation, transportation and social activities should reach the Course Secretariat, not later than **June 30<sup>th</sup>, 2014**.

## Cancellation policy for registration and hotel accommodation

1. Cancellation requests must be made to the Course Secretariat in writing. For cancellation received by **June 30<sup>th</sup>, 2014**, a refund of the total fee, less 25% as administration charge, will be made. After that date refunds will not be possible.
2. Written cancellation received by **May 30<sup>th</sup>, 2014**: 1 night cancellation fee applies.
3. Written cancellation received by **June 30<sup>th</sup>, 2014**: 2 nights cancellation fees apply.
4. Written cancellation received after **June 30<sup>th</sup>, 2014**: 100% cancellation fees.

*Note: Amount due will be reimbursed after the Course.*

## Mode of Payment for Registration/ Hotel Accommodation

Payment can be effected either:

- a) By Bank remittance to: Alpha Bank to the order of **ERA Ltd**, Account No: 101-00-2002044307, (Swift Code CRBAGRAAXX).


Please enclose a copy of transfer receipt with the form. Bank will carry all charges on clients' expenses.

- b) By major credit cards. Please complete the relevant information as described in the registration form. A written confirmation will be sent to you by the Course Secretariat upon receiving your registration/reservation form and fees.  
A surcharge of 3% will be added to all payments made by credit card, covering the Bank expenses.





Please type or print in capital letters and return this form to the Course Secretariat:

 ERA Ltd, 17, Asklipiou Str., 106 80, Athens, Greece, either **by Fax:** (+30) 210 3631 690, or **by e-mail:** info@era.gr

**DELEGATE'S DETAILS**

**FAMILY NAME:** .....

**FIRST NAME:** .....

**TITLE:** Mr. Mrs.  Ms.  Dr.  Prof.

**INSTITUTION/ORGANIZATION**

**ADDRESS:** .....

**CITY/TOWN:** ..... **ZIP CODE:** .....

**COUNTRY:** .....

**TEL:** ..... **FAX:** .....

**MAIL\*:** ..... @ .....

**MOBILE PHONE:** .....

\* Please print your e-mail address **legibly** as all correspondence will be delivered by e-mail.

REGISTRATION & RESERVATION FORM

13<sup>th</sup>  
INTERNATIONAL  
POSTGRADUATE  
COURSE IN  
ENDOCRINE  
SURGERY  
28/9-1/10  
2014  
HOTEL  
COSTA NAVARINO  
MESSINIA  
GREECE

**I. Registration Fees (Upon invoicing a 23% VAT is applicable on the registration fees)**

Description	Until May 30 <sup>th</sup>	After May 30 <sup>th</sup>
General Participation	350 €	400 €
Member of Hellenic Medical Societies	200 €	200 €
<b>TOTAL FOR REGISTRATION (I)</b>		<b>€</b>

The registration fees for participants cover: • Access to the Scientific Sessions and Exhibition • Opening Ceremony followed by a Welcome Dinner, on Sunday, September 28<sup>th</sup>, 2014 • Course material (Meeting kit, Book of Abstracts, Certificate of attendance) • Coffee breaks & light lunches with refreshments

Registrations will be confirmed only after the settlement of their payment





## II. Hotel Accommodation (Reservation of three nights hotel accommodation is compulsory)

Arrival date: ..... /..... /2014

Departure date: ..... /..... /2014

Hotel	Single Room	Double Room	No of rooms	No of Nights	Total in €
Hotel Costa Navarino	140 €	140 €	X .....	X .....	€
<b>TOTAL FOR HOTEL ACCOMMODATION (II)</b>					<b>€</b>

### \* I will share my accommodation:

• In Double room with: 1. Family Name ..... First name(s): .....

Please inform us if the accompanying person(s) sharing delegate room is/are: **ADULT(S)**  - **CHILD\***  \*Year of Birth: yyyy ..... /..... /..... /.....

• Room reservations will be made on a first-come first-served basis. Please return this form to ERA Lt, no later than **June 30, 2014**.

After this date, requests will be accepted but subject to hotels' availability. Hotels Reservations should be sent to **ERA Ltd** and not to the Hotels.

## III. Transportation with bus (from Athens to Costa Navarino hotel and return).

Reservations until **June 30<sup>th</sup>, 2014**. Minimum participation **30 pax**

Route	Date	Time	Cost per persons (Round Trip)	Pax	Total in €
Athens* - Costa Navarino Hotel	Saturday, September 27 <sup>th</sup> , 2014	16.30 hrs		X .....	€
Athens* - Costa Navarino Hotel	Sunday, September 28 <sup>th</sup> , 2014	08.00 hrs	70 €	X .....	€
Costa Navarino Hotel - Athens*	Wednesday, October 1 <sup>st</sup> , 2014	14.00 hrs		X .....	€
<b>TOTAL (III)</b>					<b>€</b>

\* meeting point will be announced soon

## IV. Course Farewell Dinner

	Cost per person	No of persons	Total in €
Course Farewell Dinner, on 30/09/2014	60 €	X ..... pax	€
<b>TOTAL FOR FAREWELL DINNER (IV)</b>			<b>€</b>
<b>GRAND TOTAL ( I, II, III, IV)</b>			<b>€</b>

### Payment conditions for registration and hotel reservation

- Full payment of the registration fee is required.
- Two (2) nights deposit, payable to ERA Ltd, is required in order to confirm your Hotel Reservation, not later than **May 30<sup>th</sup>, 2014**.
- Full payment for Hotel accommodation, transportation and social activities should reach the Course Secretariat, not later than **June 30<sup>th</sup>, 2014**.

### Cancellation policy for registration and hotel accommodation

1. Cancellation requests must be made to the Course Secretariat in writing. For cancellation received by **June 30<sup>th</sup>, 2014**, a refund of the total fee, less 25% as administration charge, will be made. After that date refunds will not be possible.
2. Written cancellation received by **May 30<sup>th</sup>, 2014**: 1 night cancellation fee applies.
3. Written cancellation received by **June 30<sup>th</sup>, 2014**: 2 nights cancellation fees apply.
4. Written cancellation received after **June 30<sup>th</sup>, 2014**: 100% cancellation fees.

### Method of Payment for Registration / Accommodation

Payment can be effected either:

#### a) By bank remittance stating:

To Alpha Bank to the order of ERA Ltd Account No: **101.00.2002.044307**

IBAN: **GR66 0140 1010 1010 0200 2044 307**, SWIFT: **CRBAGRAAXXX**, HOLDERS ACCOUNT: **ERA LTD**

BANK ADDRESS: **40 STADIOU STR. P.C.102-52, ATHENS KENTPIKO**

Please check that your name and the course name are clearly indicated in order to ensure that the payment will be correctly registered. If payment is made for more one person or by a company please make sure all names are indicated and send fully completed Registration forms together with a copy of the Bank transfer. **Bank Charges should be paid by sender in addition to the Registration and accommodation fees.**

Please enclose a copy of transfer receipt with the form.

#### b) By major credit cards. Please complete the relevant information as described below.

Written confirmation will be sent by **ERA Ltd**, upon receiving your Reservation form.

**For deposit:** I authorize **ERA Ltd** to debit my Credit Card, for the Sum of: **EUR** .....

**For full payment:** I authorize **ERA Ltd** to debit my Credit Card by **June 30<sup>th</sup>, 2014** and settle my debit account to the Course

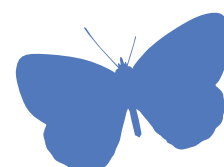
VISA  MASTERCARD  AMEX  Expiration Date : ..... /.....

Card Number: \_\_\_\_\_/\_\_\_\_\_/\_\_\_\_\_/\_\_\_\_\_

Cardholder's name: .....

Signature : .....

Date : ..... / ..... / .....



Course Secretariat



**ERA Ltd**  
17, Asklipiou Str., 106 80 Athens, Greece  
Tel:+30 210 3634 944, Fax: + 30 210 3631690  
e- mail: info@era.gr, Web site: www.era.gr

